

IoT SuperServer SYS-110A-24C-RN10SP



More details here

Key Applications

1U Short-Depth Edge Server, Network Appliance & Security, SD-WAN and vCPE / uCPE, Hyper Converged Infrastructure,

Key Features

- Intel® Atom® Snow Ridge P5362 24-Core with embedded QAT support;
- 1x PCIe 3.0 x8 expansion for AOC;
- 2 Hot-swap 2.5" SATA3 drive bays;
- 3x 40x28mm 4-PIN PWM fans;
- Cost Effective 1U Short-Depth Chassis with Redundant 300 PSU;
- M.2 selections (M.2 M-Key for SSD, B-Key for WAN or 4G-LTE module, Ekey for WiFi); TPM Onboard and header both, IPMI with OOB support;



Form Factor	1U Rackmount Enclosure: 437 x 43 x 249mm (17.2" x 1.7" x 9.8") Package: 655 x 155 x 465mm (25.8" x 6.1" x 18.3")
Processor	Single FCBGA-2106 Intel® Atom® Snow Ridge P5362
System Memory	Slot Count: 4 DIMM slots Max Memory (2DPC): Up to 256GB 2933MT/s ECC DDR4 RDIMM
Drive Bays	2x 2.5" hot-swap SATA/SAS drive bays 1x M-Key 2242/2280/22110 (PCIe 2.0 x4/SATA 2.0/USB 2.0) 1x B-Key 2242/3042/2280 (PCIe 2.0 x2/SATA 2.0/USB 3.0) 1x E-Key 2230 (PCIe 2.0 x1/USB 2.0)
Expansion Slots	1 PCIe Gen 3.0 x8 HHHL slot(s)
On-Board Devices	SATA: SATA3.0 Chipset: Intel® P5362 Network Connectivity: 4x 1GbE BaseT with Intel® I350-AM4 4x 1GbE BaseT with Marvell 88E1543 2x 25GbE SFP28 with Intel® P5000 SoC
Input / Output	SATA: 2 SATA (6Gbps) port(s) LAN: 1 Dedicated IPMI LAN port 8x 1 GbE 2x 25 GbE USB: 2 USB 3.1 Gen1 port(s) (2 USB) Video: 1 VGA port(s)

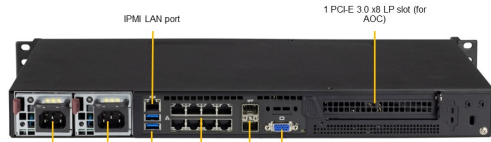
(Front View – System)



Power Button with Status LED

Drive Bay	Description
0-1	2x 2.5" Hot-swap SATA3 Drive Bays

(Rear View – System)



IPMI LAN port
 1 PCIe 3.0 x8 LP slot (for AOC)
 Redundant 300W Gold Level Power Supplies
 2 USB 3.0 Ports
 8 RJ45 GbE Ports
 VGA Port

System Cooling	Fans: 3x 4-PIN PWM 40x28mm Fan(s)
Power Supply	300W Redundant Gold Level power supplies
System BIOS	BIOS Type: AMI 32MB UEFI
PC Health Monitoring	FAN: Pulse Width Modulated (PWM) fan connectors Fan speed control, Dual Cooling Zone Support 3-pin fans (w/o speed control) 3 fans with tachometer status monitoring, Status monitoring for speed control Temperature: CPU thermal trip support Thermal Control for 3 Fan Connectors
Dimensions and Weight	Height: 1.7" (43 mm) Width: 17.2" (437 mm) Depth: 9.8" (249 mm) Gross Weight: 12 lbs (5.44 kg) Net Weight: 8 lbs (3.63 kg) Packaging: 6.1" (H) x 25.8" (W) x 18.3" (D) Available Color: Black
Operating Environment	Operating Temperature: 0°C ~ 40°C (32°F ~ 104°F) Non-operating Temperature: -40°C to 70°C (-40°F to 158°F) Operating Relative Humidity: 8% to 90% (non-condensing) Non-operating Relative Humidity: 5% to 95% (non-condensing)
Motherboard	Super A3SSV-24C-SPLN10F
Chassis	CSE-506TS-R000NP

Parts List

Standard Parts (Parts Included)

Motherboard / Chassis					
Part Number	MBD-A3SSV-24C-SPLN10F	CSE-506TS-R000NP			
Qty	1	1			
Description	Super A3SSV-24C-SPLN10F Motherboard	1U Chassis			
Backplane					
Part Number	BPN-SAS3-826TQ-B2B				
Qty	1				
Description	2-port 2U SAS3 12Gbps backplane, support up to 2x 2.5-inch SAS3/SATA3 HDD/SSD				
Cable					
Part Number	CBL-0234L	CBL-SAST-0538	CBL-PWCD-0260-IS	CBL-PWEX-1097-15	CBL-PWEX-1098F-10
Qty	1	2	2	1	1
Description	Y CABLE FOR 4-PIN HDD	7pin SATA (STR to RA),29cm,PBF	PWCD,US,NEMA5-15P TO IEC60320 C13,6FT,18AWG,ROHS,REACH	[NR] CBL_FRONT CNTL_16 TO 16 PIN,Ribbon,15CM	[NR] 16PIN CNTL PANEL CONVERTER CBL FOR SC826,PBF,FFC,10CM
Rear Window					
Part Number	MCP-240-00091-0N				
Qty	1				
Description	1U universal riser card bracket for standard chassis,HF,ROHS,REACH,PBF				
Parts					
Part Number	MCP-260-00135-0B	MCP-260-00100-0B			
Qty	1	1			
Description	1U 504/505/510 I/O Shield for A2SDV-LN10PF with EMI Gasket	1U I/O Shield			
Air Shroud					
Part Number	MCP-310-50601-0B				
Qty	1				
Description	Mylar air shroud for SC506 with A3SSV-24C-SPLN10F				
Manual					
Part Number	MNL-2278-QRG				
Qty	1				
Description	110A-16C/24C-RN10SP Quick Reference Guide				
Riser Card					
Part Number	RSC-RR1U-E8				
Qty	1				
Description	RSC-RR1U-E8				
*Power Supply					
Part Number	PWS-301P-1R				
Qty	2				
Description	1U 300W Redundant Single Module for PWS-301R-1R				
*Power Distributor					
Part Number	PDB-PT506-N24				
Qty	1				
Description	1U 300W Redundant Backplane and Housing for PWS-301R-1R, RoH				
*Fan					
Part Number	FAN-0065L4				
Qty	3				
Description	4028mm 13K RPM 4-PIN PWM FAN for SC813MF, SC113M				
*Front Panel					
Part Number	FPB-FP826-D	FPB-TB826			
Qty	1	1			
Description	Front control board Dual color LED(FP826-D)forSC826,213,216,	16 pin Cable Adaptor Board for SC826			
*Drive Tray(s)					
Part Number	MCP-220-00147-0B				
Qty	2				
Description	Black gen-3 hot-swap 2.5"; Tool-less HDD tray (clip design)				
*Fan Holder					
Part Number	MCP-320-81302-0B				
Qty	3				
Description	Optional fan tray for one 40x28mm fan in SC813T/SC813LT-single PWS (Fan tray only)				

Notes:

1. Parts with * are inside the chassis
2. Excessive parts might not be shipped, including but not limited to excessive drive trays, fans, riser brackets, air shrouds, IO shields, cables.....etc.

Optional Parts List

TPM security module	
Part Number	AOM-TPM-9671V-O
Qty	1
Description	SPI capable TPM 1.2 with Infineon 9671 controller with vertical form factor