



WE KEEP IT GREEN®

# Supermicro Server Manager (SSM)

Maximizes server uptime and health with minimal efforts from an Enterprise IT administrator

The Supermicro Server Manager utility monitors and manages a wide portfolio across multiple generations of Supermicro servers within a single console as in Figure 1 below.

SSM provides capabilities to monitor the health of server components including memory, hard drives and RAID controllers. It enables the datacenter administrator to monitor and manage power usage across all Supermicro servers allowing users to maximize their CPU payload while mitigating the risk of tripped circuit. Firmware upgrades on Supermicro servers became easier now with a couple of clicks. Administrators can now mount an ISO image on multiple servers and reboot the servers with those images. The tool also provides pre-defined reports and many more features that will make managing Supermicro servers simpler.

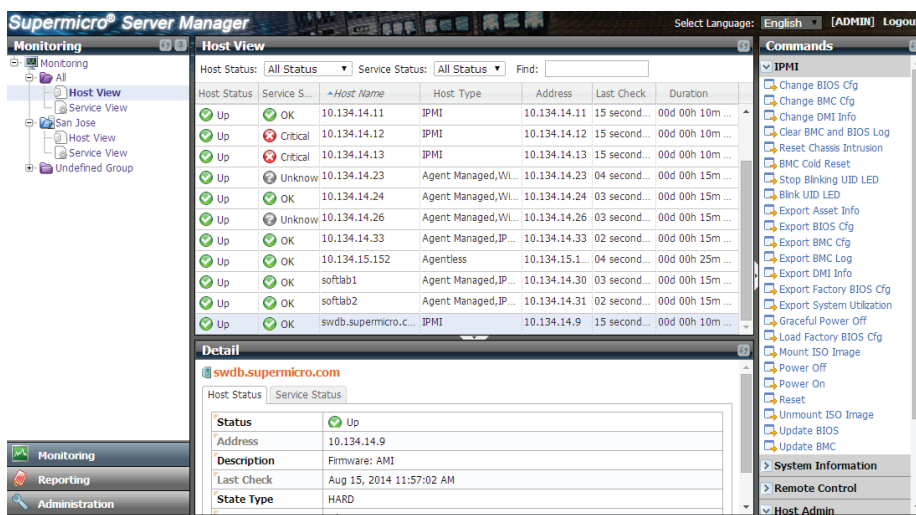


Fig 1: Screenshot of SSM Console

## BENEFITS

- Easy to use console reduces deployment time of Supermicro servers to hours
- Upgrade and Configuration commands on multiple machines in parallel exponentially reduces hardware maintenance time
- Single tool installation and single console to harness the advantages of multiple features
- CLI and WebUI provides options to integrate Supermicro server management in existing framework
- Support for open source Nagios Plugins leverages existing work from the community

## Key Features

1. Monitor Server hardware and service health. Upgrade Server BIOS and IPMI firmware and configurations
2. Groups together server clusters spread across different networks and manage remotely as in Figure 2
3. Check Asset information (SD5 should be installed)
4. Check System utilization through IPMI (Only available on X10)
5. Mount bootable iso image to install operating systems
6. Flexibility to monitor and manage power on a node or in a rack across your datacenter with configurable policies
7. Remote console to target machines through VNC
8. Log and Report the server information and availability
9. Update SuperDoctor5 on target systems
10. Administer E-mail alerts through SMTP protocol



SSM Remote Console

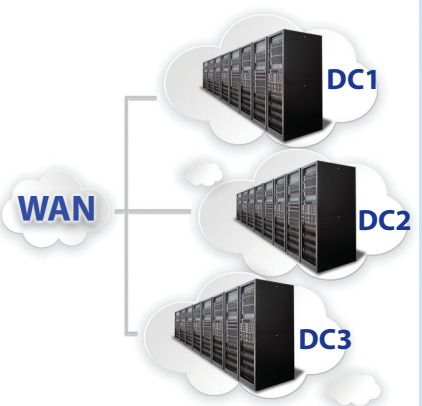


Fig 2: Remote Management across Server clusters



# Supermicro Server Manager (SSM)

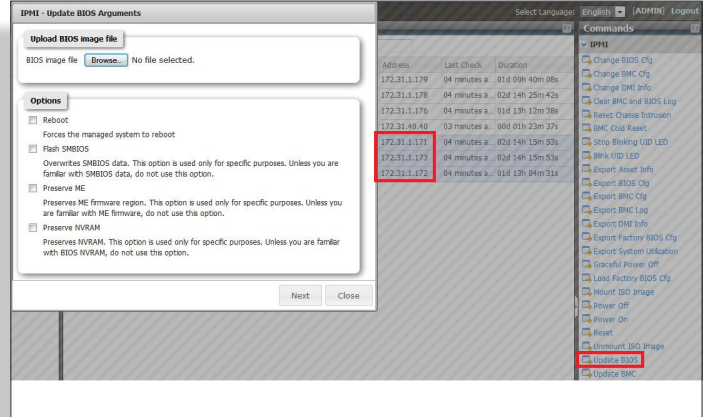
## Common Use Cases Scenarios

Integrate Supermicro Server Management in existing Datacenter infrastructure framework with CLI option

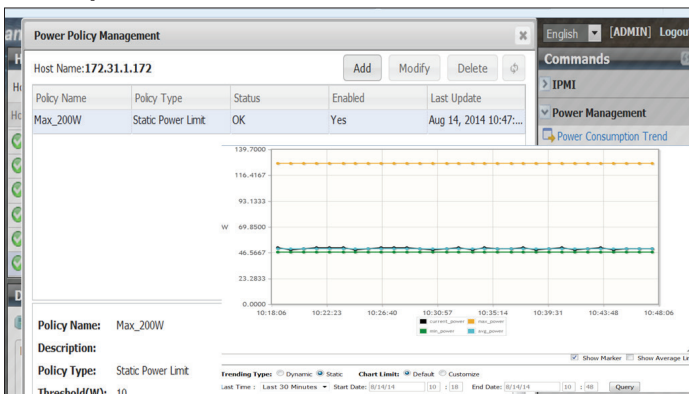
Product - X8DTU SSM version - 1.0-Beta-build.127-20110425161702 Copyright(c) 1993-2011 Super Micro Computer, Inc.		
Monitored Item	High Limit	Low Limit
CPU1 Temp		
CPU2 Temp		
System Temp	81C/177F	
CPU1 Vcore	1352mV	824mV
CPU2 Vcore	1352mV	824mV
+1.5V	1656mV	1336mV
+5V	5536mV	4480mV
+5VSB	5536mV	4480mV
+12V	13250mV	10706mV
-12V	-11222mV	-12580mV
+3.3V	3648mV	2928mV
+3.3VSB	3648mV	2928mV
VBAT	3648mV	2928mV
Fan7		675RPM
Fan8		675RPM
Intrusion		
PS Status		
/dev/sda		
/dev/sdb		

Upgrade BIOS on server clusters in less than 10 minutes\*

\* Depends on remote machines CPU, memory and network speeds



Optimize power consumption in datacenter operations with custom policies



Generate history reports to understand server's health helping administrators take pro-active steps to mitigate business impact

History Report

History Type : State History    Monitor : All    State : All State    State Type : All State Type

Last Time : Last 24 Hours    Start Date : 8/14/14    4 : 32    End Date : 8/15/14    4 : 32    Query

<< 1 2 >>

Host Name	Service Name	State Time	State	State Type	Attempt	Status Information
172.31.40.40	IPMI Health All	Aug 14, 2014 6:43:59 AM	OK	HARD	1/3	Checked:11, OK:11
172.31.40.40	IPMI Health All	Aug 14, 2014 6:46:03 AM	Critical	SOFT	1/3	Checked:11, OK:10, Critical:1 Critical Item: PS1 Status=Bad;
172.31.40.40	IPMI Health All	Aug 14, 2014 6:48:06 AM	OK	HARD	1/3	Checked:11, OK:11
172.31.40.40	IPMI Health All	Aug 14, 2014 6:48:31 AM	Critical	SOFT	1/3	Checked:11, OK:10, Critical:1 Critical Item: PS1 Status=Bad;
172.31.40.40	IPMI Health All	Aug 14, 2014 6:50:36 AM	Critical	HARD	1/3	Did not reply IPMI request!
172.31.40.40	IPMI Health All	Aug 14, 2014 6:52:51 AM	OK	HARD	1/3	Checked:10, OK:10
172.31.40.40	IPMI Health All	Aug 14, 2014 6:54:51 AM	Warning	SOFT	1/3	No sensor data.
172.31.40.40	IPMI Health All	Aug 14, 2014 6:56:45 AM	Critical	SOFT	2/3	Checked:17, OK:16, Critical:1 Critical Item: Chassis Intru=Bad;
172.31.40.40	IPMI Health All	Aug 14, 2014 6:56:59 AM	Critical	HARD	1/3	Checked:17, OK:16, Critical:1 Critical Item: Chassis Intru=Bad;
172.31.40.40	check_ipmi	Aug 15, 2014 3:06:15 AM	Down	SOFT	1/3	Did not reply IPMI request!

## Hardware and Software Requirements

HARDWARE	4.0 GB free disk space, An Ethernet network interface card, Available 8.0 GB RAM(May need more depending on the number of managed system)
Operating System	Red Hat Enterprise Linux Server 5.x(64-bit), 6.x(64-bit), 7.x(64-bit), SUSE Linux Enterprise 11.x(64-bit), 12.x(64-bit), Windows 2008 Server R2 64-bit, 2012 Server R2 64-bit, 2016 Server 64-bit
Browser	Internet Explorer 11.x or higher, Firefox 3.x or higher
Screen Resolution	1024 x 768

## Order Information

SKU: SFT-DCMS-Single

Trial Version: 45 day period (Firmware upgrade functionality not available in trial license)

Please contact your Supermicro Sales representative or your local authorized reseller for more information.

Website: [http://www.supermicro.com/products/info/SMS\\_SSM.cfm](http://www.supermicro.com/products/info/SMS_SSM.cfm)

