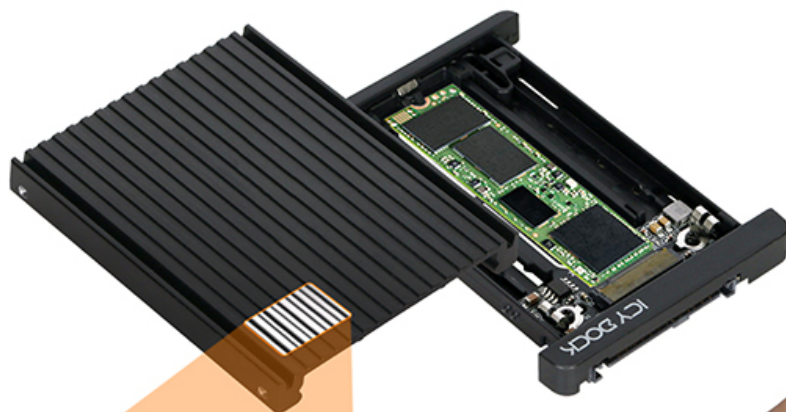


# EZConvert MB705M2P-B

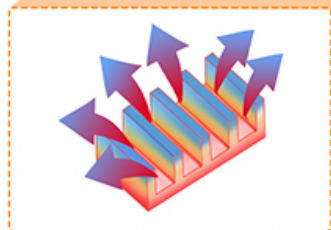


M.2 PCIe 3.0/4.0 NVMe SSD to 2.5" U.2 SSD  
Converter / Mounting Adapter

ICY DOCK®  
www.icydock.com

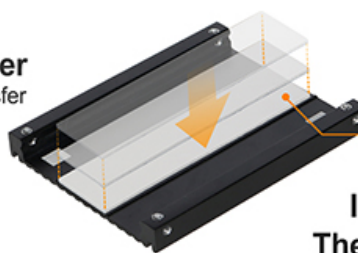


Converts M.2 into  
Hot-Swappable  
Device



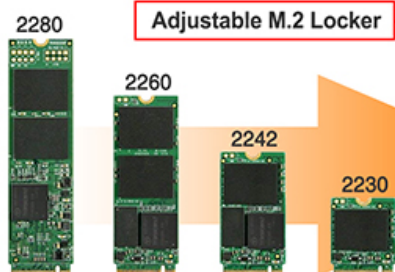
## Metal Heatsink Cover

Provides maximum heat transfer  
& drive protection



## Included Thermal Pads

Promotes heat dissipation & optimal temperature

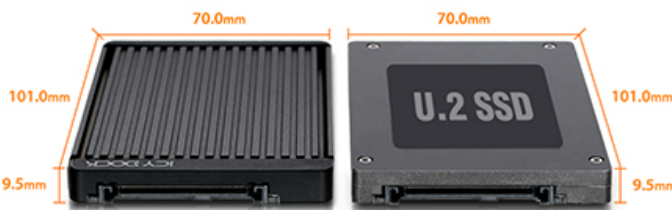


## Adjustable M.2 Locker

Compatible M.2 NVMe sizes



## Exact Same Dimension as Standard U.2 NVMe SSD



## EZConvert MB705M2P-B Features & Specs

- Convert your M.2 NVMe SSD into the 2.5" U.2 NVMe form factor
- Exact same dimensions as a standard U.2 drive
- Accepts any M.2 PCIe NVMe SSD from 30mm to 80mm in length
- Enables hot-swap functionality for any M.2 PCIe NVMe SSD
- Hot-Swap Ready 10,000 insertion/removal cycle rated connector
- Supports full Nvme bandwidth specification of 64Gbps
- 100% tool-less and screw-less M.2 drive installation
- Aluminum heat-sink lid for optimal protection and cooling performance
- Removable bottom ventilation plate for additional air flow
- Strong 1-piece ABS plastic lower body
- Fits into any U.2 backplane, hotswap bay, or 2.5" mounting bracket
- Industry leading 3 year warranty with exceptional customer support
- Complimentary global technical support

Model Number	MB705M2P-B
Color	Black
Compatible Drive Type	M.2 PCIe 3.0/4.0 NVMe SSD 2230 / 2242 / 2260 / 2280
Number of M.2	1
Device Interface	1 x SFF-8639
Power Input	1 x SFF-8639
Device Fit	1 x 2.5" U.2 drive bay (9.5mm - 15mm)
Transfer Rate	Up to 64 Gb/sec
Material	Metal & ABS Plastic
Dimension (W x H x D)	70.0 x 9.5 x 101.0mm
Product Net Weight	67g
Package Contents	Device, user manual