

# RM31616

## 3U 16-bay High Density Storage Server Chassis



### Features & Benefits

- Supports 16 x 3.5" hot-swap HDDs, slim ODD, and slim FDD
- Innovative anti-vibration fan bar for middle hot-swap fan
- Optional 2.5" OS HDD with SK51101 or SK51102
- Optional bracket for internal 3.5" or 2.5" HDD
- Supports 12Gb/s 16-port Expander backplane

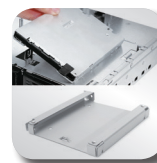
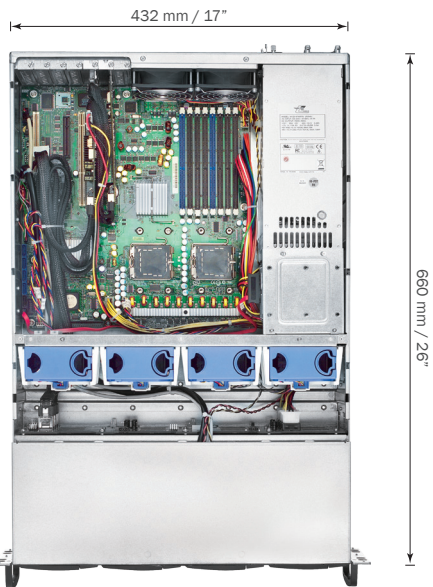
### Specification

<b>M/B Form Factor</b>	• Extended ATX (12" x 13")
<b>Dimension (D x W x H)</b>	• 660 x 432 x 132 (mm), 26" x 17" x 5.2"
<b>Drive Bay</b>	• Exposed: 16 x 3.5" Hot-swap, 1 x slim ODD, 1 x slim FDD
<b>PSU Form Factor</b>	• 2U Single or 1+1 Redundant
<b>Indicators</b>	• 1 x Power Status, 1 x HDD Activity, 1 x LAN Activity, 1 x Fan Failure & Overheat
<b>Front Control</b>	• Power On/Off, Alarm Mute, System Reset, 2 x USB2.0/ USB3.0 (Option)
<b>Cooling Fans</b>	• Middle: 4 x 80mm (T=38mm), Hot-swap, Rear: 2 x 80mm (Option)
<b>System Security</b>	• Intrusion Switch
<b>Slot Opening</b>	• 7 x full height and full length
<b>Metal Thickness</b>	• 1.2mm
<b>Materials</b>	• SGCC
<b>HDD Backplane</b>	• 12Gb/s mini-SAS HD w/expander
<b>Net Weight</b>	• 15.2 kg
<b>Gross Weight</b>	• 19.4 kg
<b>Cubic Feet</b>	• 5.07
<b>Container Info.*</b>	• 20': 196, 40': 404, 40'H: 454

\*Single Packing

### 12Gb/s Backplane

<b>P/N</b>	• 80H10331606A0
<b>Dimension (W x H)</b>	• 423 x 112 mm
<b>Backplane Type</b>	• Active
<b>Host Interface</b>	• 3 x SFF-8643
<b>HDD Interface</b>	• 2 x SFF-8680
<b>SAS Expander</b>	• LSI SAS3 x 28R
<b>Tool-less Installation</b>	• N/A
<b>Features</b>	• SES, Temperature Monitoring, Smart Fan, T-10 Zoning, I2C



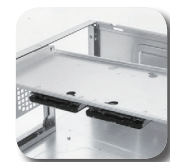
Tool-less installation for slim FDD or 2.5" HDD kit



Slim FDD or 2.5" HDD with SK51101



Fan bar with anti-vibration rubbers



Optional bracket for 1 x internal 3.5" HDD or 2 x internal 2.5" HDD

### Optional Items

	Order Code	Description
<b>Bracket</b>	84H331610-006	2x2.5" Bays, Internal, For ZIPPY M1Z3-6760P3V
	84H331610-007	2x2.5" or 1x 3.5" bay, Internal
<b>Cable</b>	26H12323602A0	mini-SAS HD to mini-SAS HD, 600mm
<b>Slide Rail</b>	84H341300-002	26", Ball Bearing
	84H321710-041	26", Ball Bearing, Tool-less
<b>Bezel</b>	84H331610-016	3U, Plastic(SilFox)

※ PSU ※ M/B Support ※ I/O Gasket ※ Air Duct ※ (Detailed in CHENBRO websites)

### Order Information

Order Code	M/B	Backplane	Cooling Fan(mm)	PCI Slot	PSU	Slide Rail
RM31616E3	12" x 13"	12Gb/s mini-SAS HD w/Expander	4 x 8038	7 x FF	Option	Option